



**Designed for possibilities.
Made for people.**



altro.com

Altro Operetta

Altro Orchestra

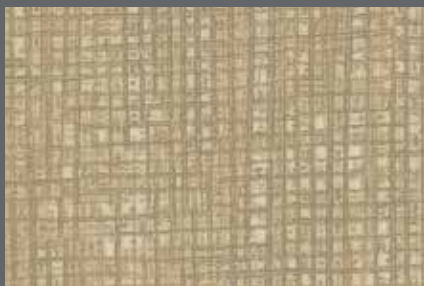
Altro Serenade

Altro Orchestra Custom



Altro Orchestra™ (15dB)

additional designs / weitere Designs / diseños adicionales / autres dessins



15dB Rigoletto | CH2876U



15dB Traviata | CH2877U



15dB Bassoon | CH2831U



15dB Carlotta | CH2865U



15dB Kora | CH2871U



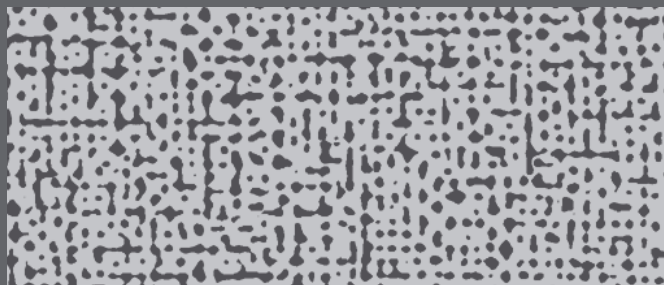
15dB Seville | CH2860U



15dB Nabucco | CH2873U



15dB Marimba | CH2863U



15dB Fidelio | CH2868U

Further options are available online. To find out more and order your free A4 samples visit www.altro.com/Altro-Orchestra

Weitere Optionen sind online verfügbar. Um mehr zu erfahren und Ihre kostenlosen A4-Muster zu bestellen, besuchen Sie www.altro.com/Altro-Orchestra

Más opciones están disponibles online. Para más información consiga sus muestras gratuitas en tamaño A4 visitando www.altro.com/Altro-Orchestra

D'autres options sont disponibles en ligne. Pour en savoir plus et commander vos échantillons A4 gratuits, rendez-vous sur www.altro.com/Altro-Orchestra

Altro Operetta™ (4dB), Altro Orchestra™ (15dB), Altro Serenade™ (19dB)



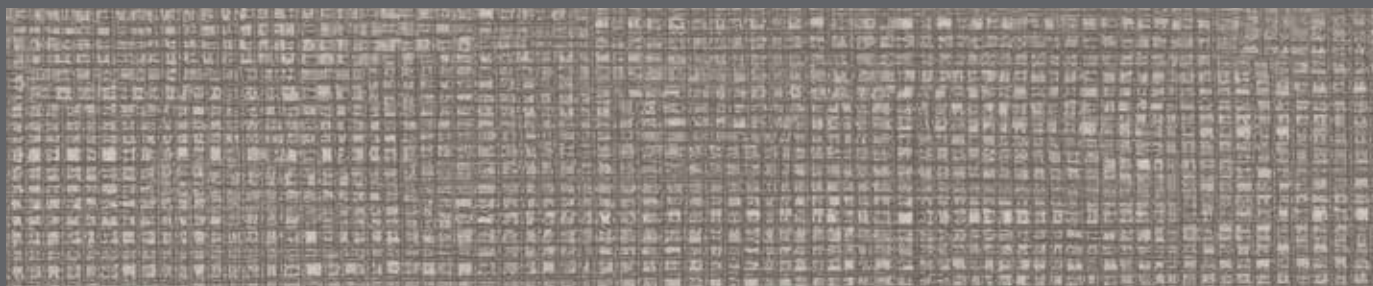
15dB

Guitar | CH2828U
WR449 / A1M137 / LRV 29



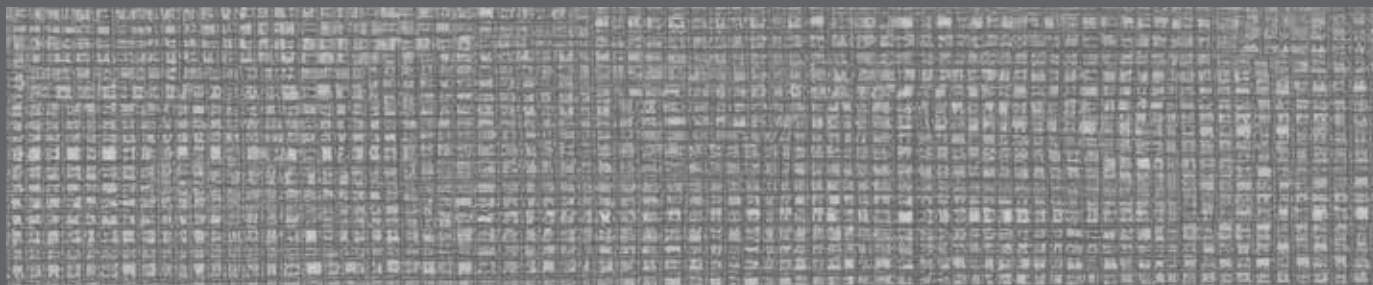
4dB
15dB
19dB

Clef | OP2125U
Trumpet | CH2825U
March | SE3925U
WR446 / A1M347 / LRV 37



4dB
15dB
19dB

Drop | OP2127U
Glockenspiel | CH2827U
Opus | SE3927U
WR448 / A1M361 / LRV 23



4dB
15dB
19dB

Canon | OP2129U
Cello | CH2829U
Encore | SE3929U
WR450 / A1M81 / LRV 24

Codes: WR = weld rod, A1M = mastic, LRV = light reflectance value

Abkürzungen: WR = Schweißschnüre, A1M = Dichtmasse, LRV = Lichtreflexionsgrad

Códigos: WR = Cordón de soldadura, A1M = Mástique, LRV = Valor de reflectancia de la luz

Codes: WR = cordons de soudure, A1M = mastic, LRV = IRL : Indice de Réflexion Lumineuse



4dB
15dB

Cabasa | OP2161U
Timpani | CH2861U
WR504 / A1M417 / LRV 20



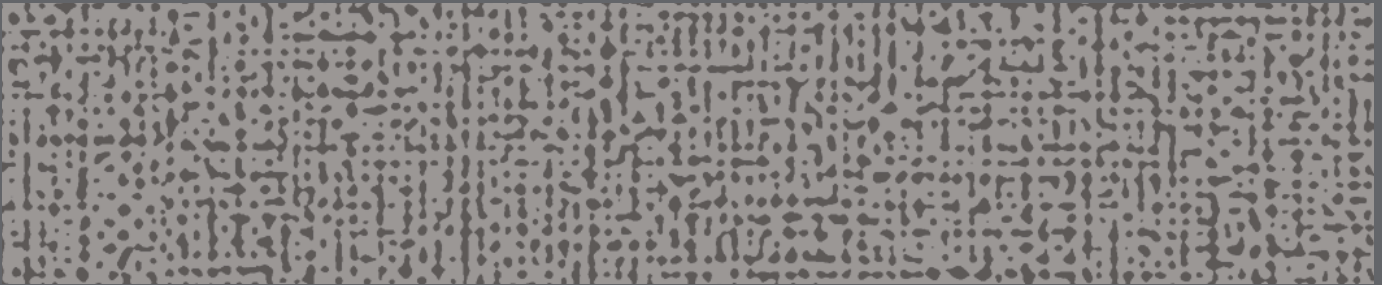
4dB
15dB
19dB

Tutti | OP2157U
Aurora | CH2857U
Andante | SE3957U
WR500 / A1M136 / LRV 60



15dB

Reed | CH2874U
WR513 / A1M85 / LRV 39



4dB
15dB

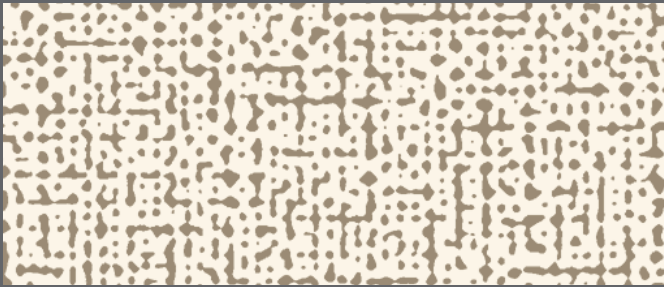
Beethoven | OP2159U
Polka | CH2859U
WR502 / A1M390 / LRV 23



4dB
15dB

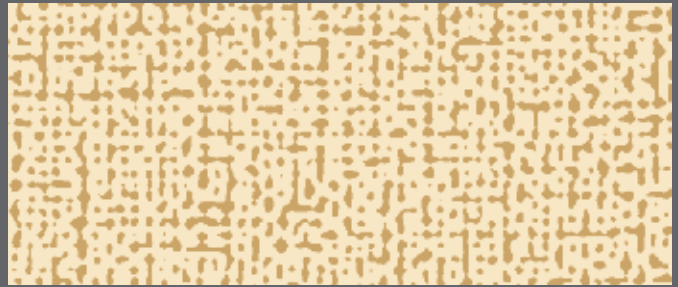
Shake | OP2164U
Cornet | CH2864U
WR506 / A1M82 / LRV 20

Light reflectance values measured in accordance with BS 8493:2008. Exact material match with samples cannot be guaranteed.
Lichtreflexionsgrad (LRV) gemäß BS 8493:2008. Eine exakte Übereinstimmung des Materials mit Mustern kann nicht garantiert werden.
Los valores de reflectancia de la luz se miden de acuerdo con BS 8493:2008. Las muestras no pueden garantizar un color exacto.
Les valeurs de l'indice de Réflexion Lumineuse sont mesurées conformément au BS 8493:2008. Les échantillons ne peuvent garantir le coloris exact.



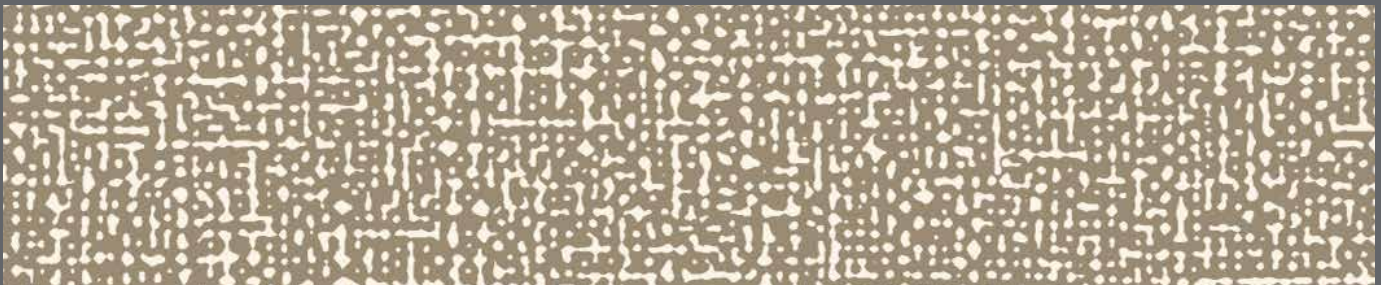
15dB

Macavity | CH2867U
WR508 / A1M11 / LRV 57



15dB

Elektra | CH2870U
WR511 / A1M392 / LRV 58



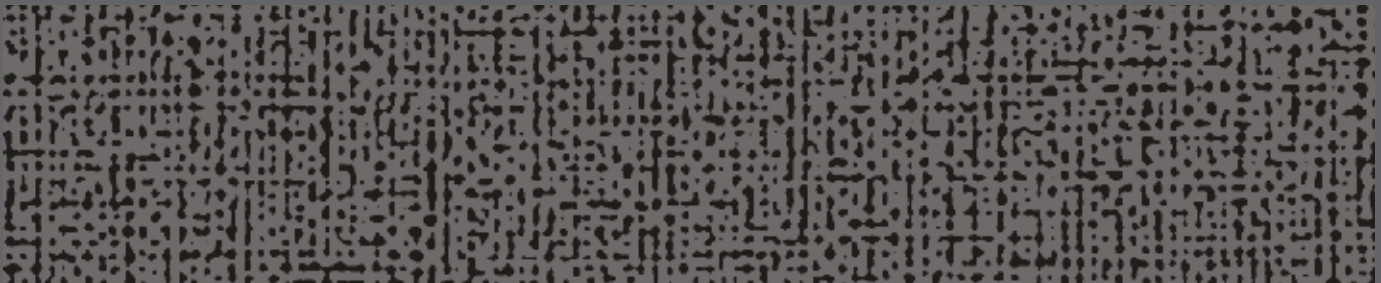
4dB
15dB
19dB

Allegra | OP2169U
Sitar | CH2869U
Charm | SE3969U
WR510 / A1M347 / LRV 38



4dB
15dB
19dB

Vivo | OP2162U
Tosca | CH2862U
Elgar | SE3962U
WR494 / A1M494 / LRV 23



4dB
15dB

Black Forest | OP2158U
Figaro | CH2858U
WR501 / A1M82 / LRV 13

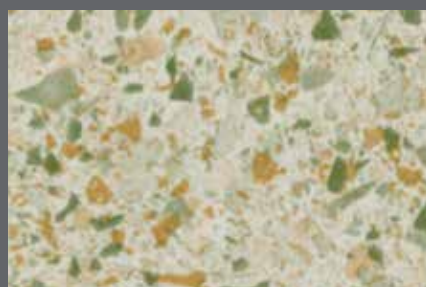


Altro Orchestra™ (15dB)

additional designs / weitere Designs / diseños adicionales / autres dessins



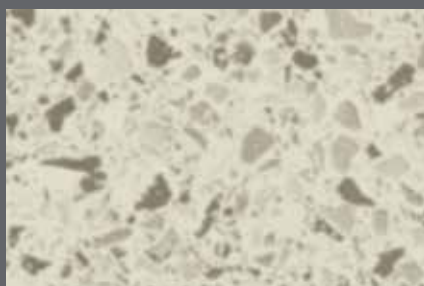
15dB Serpent | CH2850U



15dB Porter | CH2854U



15dB Volta | CH2851U



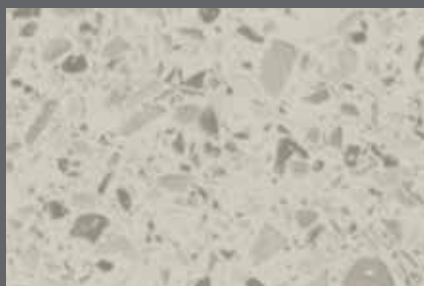
15dB Notturna | CH2853U



15dB Brass | CH2842U



15dB Woodwind | CH2843U



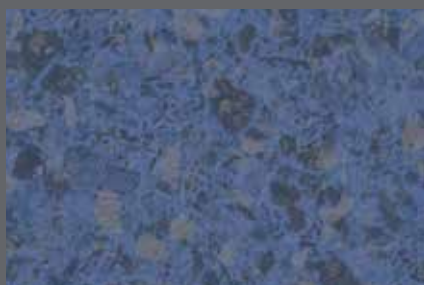
15dB Chromatic | CH2852U



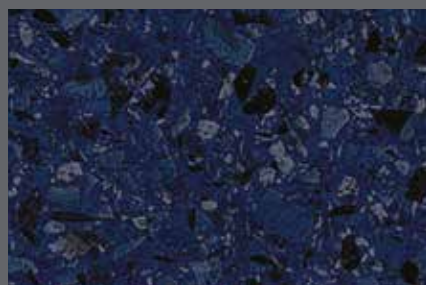
15dB Orfeo | CH2849U



15dB Othello | CH2848U



15dB Turandot | CH2847U



15dB Falstaff | CH2846U



15dB Montezuma | CH2845U

Further options are available online. To find out more and order your free A4 samples visit www.altro.com/Altro-Orchestra

Weitere Optionen sind online verfügbar. Um mehr zu erfahren und Ihre kostenlosen A4-Muster zu bestellen, besuchen Sie www.altro.com/Altro-Orchestra

Más opciones están disponibles online. Para más información consiga sus muestras gratuitas en tamaño A4 visitando www.altro.com/Altro-Orchestra

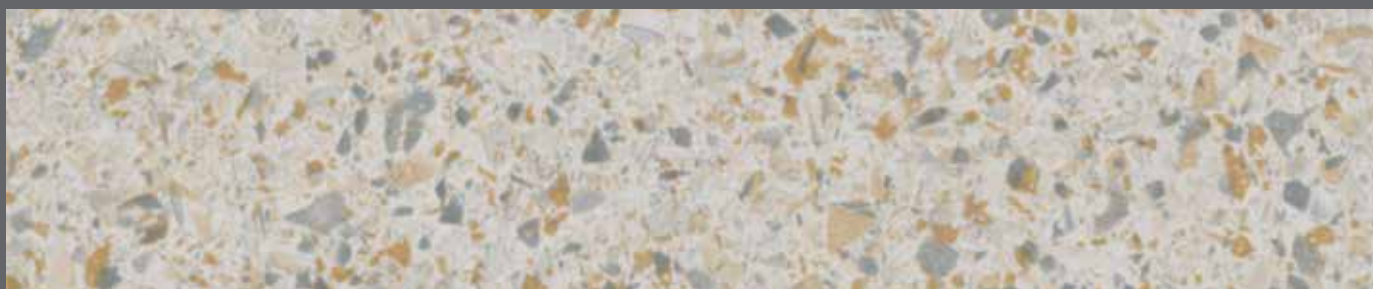
D'autres options sont disponibles en ligne. Pour en savoir plus et commander vos échantillons A4 gratuits, rendez-vous sur www.altro.com/Altro-Orchestra

Altro Operetta™ (4dB), Altro Orchestra™ (15dB), Altro Serenade™ (19dB)



4dB
15dB
19dB

Beat | OP2155U
Maraca | CH2855U
Dulcimer | SE3955U
WR499 / A1M136 / LRV 56



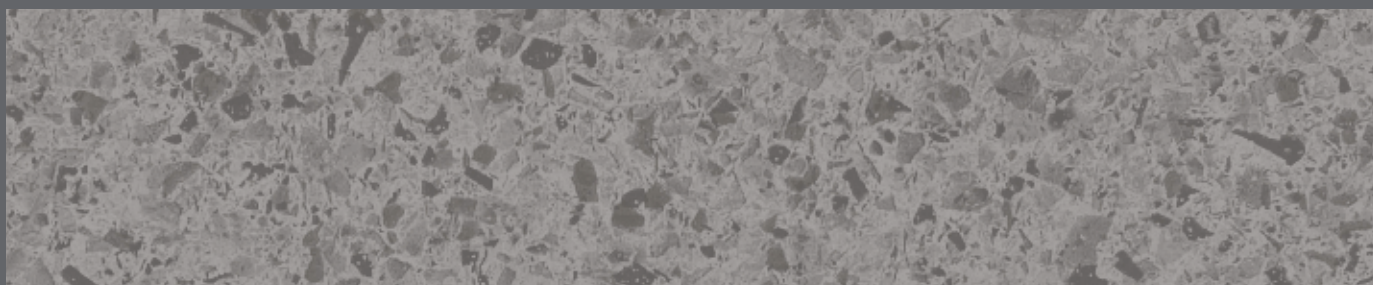
4dB
15dB

Stanza | OP2156U
Musette | CH2856U
WR515 / A1M136 / LRV 49



4dB
15dB

Vagabond | OP2141U
String | CH2841U
WR484 / A1M484 / LRV 40



4dB
15dB

Vamp | OP2144U
Percussion | CH2844U
WR490 / A1M86 / LRV 18

Codes: WR = weld rod, A1M = mastic, LRV = light reflectance value

Abkürzungen: WR = Schweißschnüre, A1M = Dichtmasse, LRV = Lichtreflexionsgrad

Códigos: WR = Cordón de soldadura, A1M = Mástique, LRV = Valor de reflectancia de la luz

Codes: WR = cordons de soudure, A1M = mastic, LRV = IRL : Indice de Réflexion Lumineuse



4dB
15dB

Glee | OP2136U
Chimes | CH2836U
WR457 / A1M335 / LRV 52



4dB
15dB
19dB

Madrigal | OP2134U
Violin | CH2834U
Chord | SE3934U
WR455 / A1M361 / LRV 31



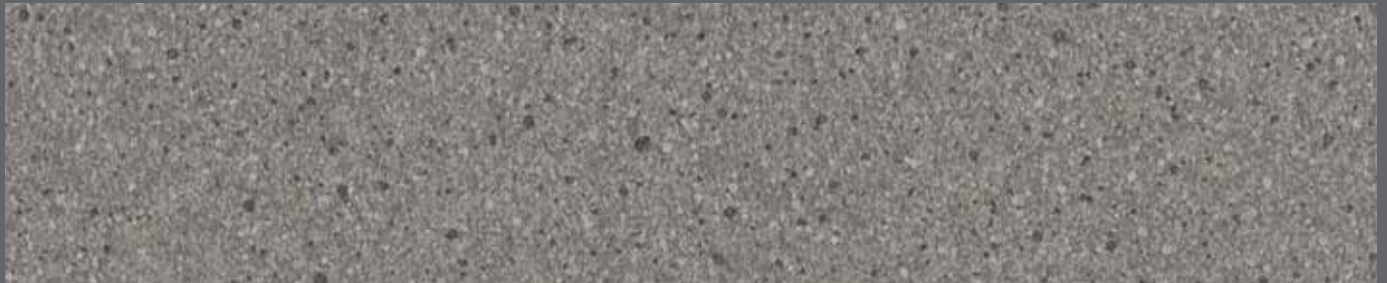
4dB
15dB
19dB

Yeoman | OP2139U
Trombone | CH2839U
Caldara | SE3939U
WR460 / A1M484 / LRV 39



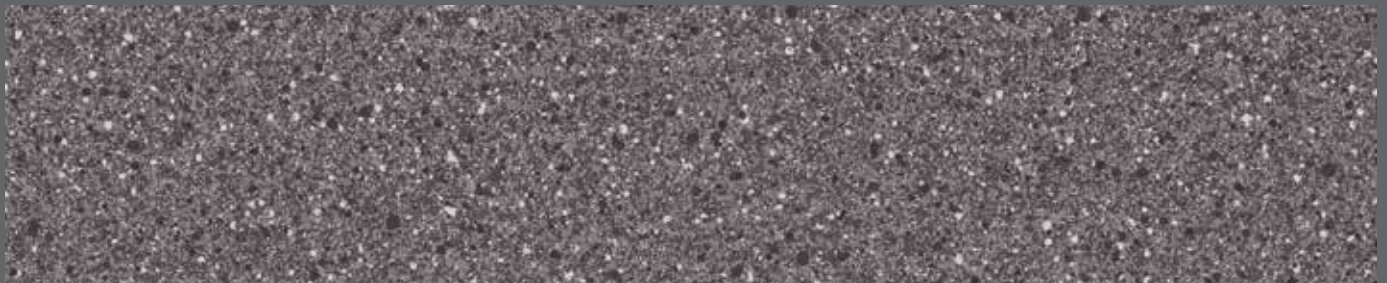
4dB
15dB

Leo | OP2179U
Conga | CH2879U
WR390 / A1M390 / LRV 30



4dB
15dB
19dB

Baroque | OP2133U
Flute | CH2833U
Anthem | SE3933U
WR454 / A1M86 / LRV 22



4dB
15dB

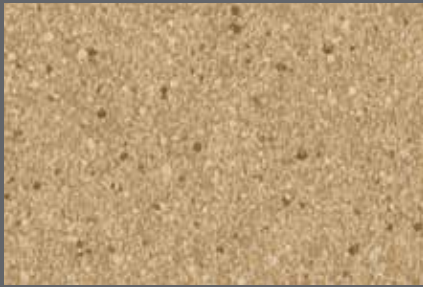
Lola | OP2178U
Manon | CH2878U
WR391 / A1M82 / LRV 17

Light reflectance values measured in accordance with BS 8493:2008. Exact material match with samples cannot be guaranteed.

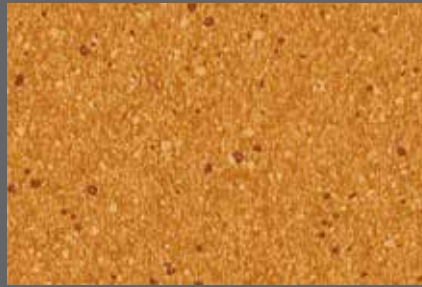
Lichtreflexionsgrad (LRV) gemäß BS 8493:2008. Eine exakte Übereinstimmung des Materials mit Mustern kann nicht garantiert werden.

Los valores de reflectancia de la luz se miden de acuerdo con BS 8493:2008. Las muestras no pueden garantizar un color exacto.

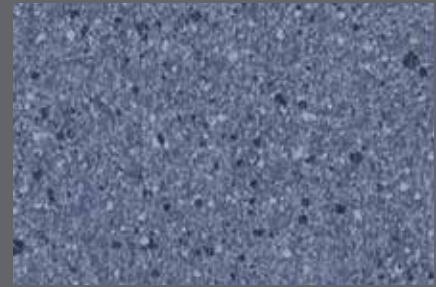
Les valeurs de l'indice de Réflexion Lumineuse sont mesurées conformément au BS 8493:2008. Les échantillons ne peuvent garantir le coloris exact.



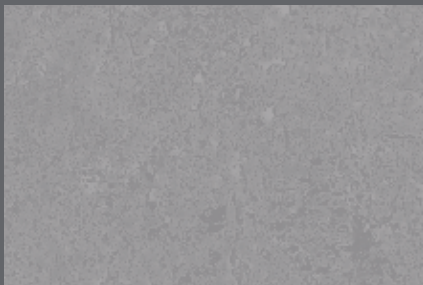
4dB
15dB Acapella | OP2135U
Oboe | CH2835U
WR456 / A1M338 / LRV 34



15dB Bongo | CH2840U
WR461 / A1M152 / LRV 27



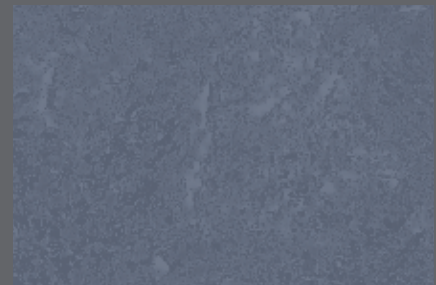
4dB
15dB
19dB Soprano | OP2137U
Drum | CH2837U
Moonlight | SE3937U
WR458 / A1M74 / LRV 18



4dB
15dB
19dB Quintet | OP2114U
Chant | CH2814U
Metronome | SE3914U
WR435 / A1M390/ LRV 26



4dB
15dB Tempo | OP2115U
Club | CH2815U
WR436 / A1M487 / LRV 17



4dB
15dB Pulse | OP2118U
Metal | CH2818U
WR439 / A1M84 / LRV 16



4dB Underside Altro Operetta*
Rückseite Altro Operetta*
Base de Altro Operetta*
Dos Altro Operetta*



15dB Underside Altro Orchestra
Rückseite Altro Orchestra
Base de Altro Orchestra
Dos Altro Orchestra



19dB Underside Altro Serenade*
Rückseite Altro Serenade*
Base de Altro Serenade*
Dos Altro Serenade*

Altro Orchestra Custom (15dB)



Ultimate design freedom, choose from our collection of images and patterns, or upload your own design.*

Ultimative Designfreiheit, Sie können aus unserer Sammlung von Bildern und Mustern wählen oder Ihr eigenes Design hochladen.*

Máxima libertad de diseño, para hacer su propio diseño, elija de entre nuestra colección de imágenes y patrones.*

Ultime liberté de conception, faites votre choix parmi notre collection de photos et de motifs ou optez pour votre propre création.*

*Swatches shown are Altro Orchestra except where indicated.

*Sofern nicht anders angegeben, handelt es sich bei den gezeigten Mustern um Altro Orchestra.

*Las muestras que se presentan son Altro Orchestra excepto donde así se indique.


















*Sauf indication contraire, les échantillons présentés sont ceux d'Altro Orchestra.



Altro Operetta™, Altro Orchestra™, Altro Serenade™

2339 04/21

Technical information / Technische Informationen / Información técnica / Information technique

	Fire behaviour tested in acc. with	Brandverhalten geprüft nach	Comportamiento ante el fuego testado de acuerdo con	Réaction au feu contrôlée selon	EN ISO 9239-1	Altro Operetta ≥ 8 kW/m ² Altro Orchestra ≥ 4.5 kW/m ² Altro Serenade ≥ 4.5 kW/m ²
	Classified in acc. with	Einstufung nach	Clasificado de acuerdo con	Classement selon	EN ISO 11925-2 EN 13501-1	Pass / Bestanden / Conforme / Conforme Altro Operetta B ₁ -s1 Altro Orchestra C ₀ -s1 Altro Serenade C ₀ -s1
	Slip resistance	Gleitreibungswiderstand Rutschhemmung/-sicherheit	Resistencia al deslizamiento	Résistance à la glissance	EN 13893 DIN 51130 / BGR 181	≥ 0.30 / DS R10*
	Sound insulation	Trittschallminderung	Aislamiento acústico	Isolation acoustique	EN ISO 10140	Altro Operetta ca. 4 dB Altro Orchestra ca. 15 dB Altro Serenade ca. 19 dB
	Flooring type	Belagsart	Tipo de pavimento	Type de sol	EN ISO 10582 Altro Operetta EN 651 Altro Orchestra Altro Serenade	Heterogeneous floor Heterogener Bodenbelag Suelo heterogéneo Sol hétérogène
	Thickness	Gesamtstärke	Espesor total	Epaisseur totale	EN ISO 24346	Altro Operetta 2.0 mm Altro Orchestra 2.85 mm Altro Serenade 3.9 mm
	Wear layer thickness	Nutzschichtdicke	Capa de uso	Couche d'usure	EN ISO 24340	0.7 mm
	Roll dimensions	Rollenformat	Dimensiones del rollo	Dimensions des rouleaux	EN ISO 24341	2 m x 20 m = 40 m ²
	Weight	Flächengewicht	Peso	Poids	EN ISO 23997	Altro Operetta 2.66 kg/m ² Altro Orchestra 2.60 kg/m ² Altro Serenade 2.90 kg/m ²
	Residual indentation	Resteindruck	Punzonamiento	Poinçonnement rémanent	EN ISO 24343-1	Altro Operetta ≤ 0.10 mm Altro Orchestra ≤ 0.20 mm Altro Serenade ≤ 0.20 mm
	Classification for use	Nutzungsklasse	Áreas de uso	Classe d'usage	EN ISO 10874	Altro Operetta 34, 43 Altro Orchestra 34, 42 Altro Serenade 34, 42
	Flexibility	Flexibilität	Flexibilidad	Flexibilité	EN ISO 24344	Pass / Bestanden / Conforme / Conforme
	Dimensional Stability	Maßänderung	Estabilidad dimensiona	Stabilité dimensionnelle	EN ISO 23999	≤ 0.4 %
	Light fastness	Farbbeständigkeit Lichtechtheit	Resistencia a la luz	Solidité à la lumière	EN ISO 105-B02	≥ 6
	Castor chair abrasion	Stuhllolleneignung	Huellas de sillas de ruedas	Résistance à la chaise à roulettes	EN 425	Yes, type W / Ja, Typ W Si, tipo W / Oui, type W
	Wear resistance	Verschleißgruppe	Abrasión	Résistance à l'usure	EN 660-2	Group T / Gruppe T / Grupo T / Groupe T
	Chemical resistance	Chemikalien-/Fleckenbeständigkeit	Resistencia a los productos químicos	Résistance aux produits chimiques	EN ISO 26987	Good / Gut / Buena / Bonne
	Underfloor heating	Eignung für Fußbodenheizung	Suelo radiante	Conductivité thermique	EN 12524	Suitable / Geeignet / Apto / compatible
	Electrical behaviours	Elektrostatisches Verhalten	Caraterísticas eléctricas	Accumulation charges électrostatiques	EN 1815	≤ 2 kV, antistatic / ≤ 2 kV, antistatisch ≤ 2 kV, antiestáticas / ≤ 2 kV, antistatique
	VOC emissions	VOC Emissionen	Emisiones de COV	Emissions de COV	CDPH 1350 / Floorscore Indoor Air Comfort Gold	Approved / Zertifiziert Conforme / Conforme Approved / Zertifiziert Conforme / Conforme



Altro Limited a company certified by SGS to ISO 9001 and ISO 14001.



EMISSIONS DANS L'AIR INTÉRIEUR
A+ | A | B | C

*Information sur le niveau d'émission de substances volatiles dans l'air intérieur, présentant un risque de toxicité par inhalation, sur une échelle de classe allant de A+ (très faibles émissions) à C (fortes émissions).



INDOOR-AIR COMFORT CERTIFIED PRODUCT
eurofins GOLD



floor score
EMISSION CLASS FOR BUILDING MATERIALS
M1

*For enhanced safety, see our ranges that offer sustained slip resistance for life.



Altro Operetta | 17 | Debolon Dessauer Bodenbeläge GmbH & Co. KG, Ebertallee 209, 06846 Dessau-Roßlau | DIN EN ISO 10582 | DOP-No. R300.1-RN-D028 | Reaction to fire: Bfl-s1 | Slip resistance: DS | Formaldehyde: E1 | DIN EN 14041:2004/AC:2006 | 1658 | Resilient floor covering to be used within a building



Altro Orchestra | 17 | debolon dessauer bodenbeläge GmbH & Co. KG, Ebertallee 209, 06846 Dessau-Roßlau | DIN EN 651 | DOP-No. R200.1 Silence-RN-D029 | Reaction to fire: Cfl-s1 | Slip resistance: DS | Formaldehyde: E1 | DIN EN 14041:2004/AC:2006 | 1658 | Resilient floor covering to be used within a building



Altro Serenade | 17 | Debolon Dessauer Bodenbeläge GmbH & Co. KG, Ebertallee 209, 06846 Dessau-Roßlau | EN 651 | DOP-No. R450.1 Silence-RN-D030 | Reaction to fire: C_s-s1 | Slip resistance: DS | Formaldehyde: E1 | EN 14041:2004/AC:2006 | 1658 | Resilient floor covering to be used within a building

Sustainability / Nachhaltigkeit / Sostenibilidad / Développement durable








†A+ BRE generic green guide rating for resilient flooring, full details available at www.thegreenguide.org.uk

Installation and maintenance / Verlegung und Pflege / Instalación y mantenimiento / Pose et entretien

Please refer to Altro installation and maintenance instructions. Failure to follow these instructions can affect product performance. Technical information on installation and staining can be found at www.altro.com

Bitte beachten Sie die Altro Verlege- und Pflegeanleitungen. Erfolgt Verlegung und Pflege des Bodenbelags nicht gemäß Anleitung, kann sich dies auf die Eigenschaften auswirken. Technische Informationen zur Chemikalienbeständigkeit sowie zur Verlegung und Pflege finden Sie unter www.altro.de

Consulte las instrucciones de instalación y mantenimiento de Altro. El no respetar estas instrucciones podría afectar al rendimiento del producto. Para más información sobre mantenimiento o instalación de nuestros productos pincha aquí: www.altroscandess.com
Veuillez vous référer aux instructions de notre guide d'installation et d'entretien. Le non respect de ces instructions peut affecter la performance du revêtement. L'information technique sur la pose et le traitement des taches est également disponible sur notre site internet www.altro.fr

 Altro, Designed for possibilities. Made for people. Altro Operetta, Altro Orchestra, Altro Serenade and Altro Easyclean technology are trademarks of Altro Limited.

United Kingdom

+44 (0) 1462 707 700

enquiries@altro.com

Australia

+61 3 9764 5666

info@asf.com.au